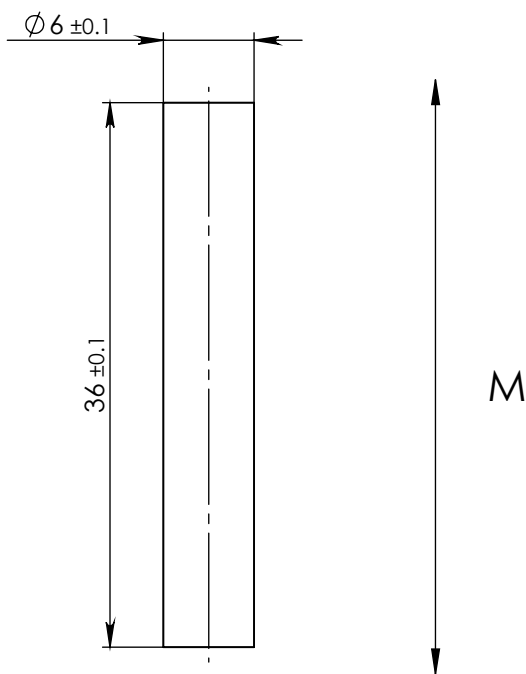



1	2	3	4
REV.	DESCRIPTION		DATE
1	Add Working Temperature and Curie Temperature.		03/09/2012
			APPROVED Igor



NOTE:
 1. Material: Grade - N35.
 2. Finish: Ni coated.

MAGNETIC CHARACTERISTICS:			
		CGS	SI
Br	MIN	11.7 kG	1.17 T
	MAX	12.2 kG	1.22 T
bHc	MIN	10.9 kOe	868 kA/m
jHc	MIN	12.0 kOe	955 kA/m
BHmax	MIN	33.0 MGOe	263 kJ/m ³
	MAX	36.1 MGOe	287 kJ/m ³

⚠ Working Temperature 80°C.
 Curie Temperature 310°C.

ASSEMBLY		NAME			SHEET 1		OF 1	
DWG.NO NDCR006036AMD		MAGNET NDCR006036A			NAME		DATE	
		Ref. NDCR006036ACD 03.04.11			SIGNATURE			
	General Shape and Position tolerance according DIN ISO 2768-mK		MATERIAL	NdFeB	DESIGNED	Igor	14.06.12	
	Surface Finish $\sqrt{3.2}$		MASS	7.63(gr)	DRAWN	Igor	14.06.12	
			SCALE	2:1	APPROVED	Rashid	14.06.12	