

1

2

3

4

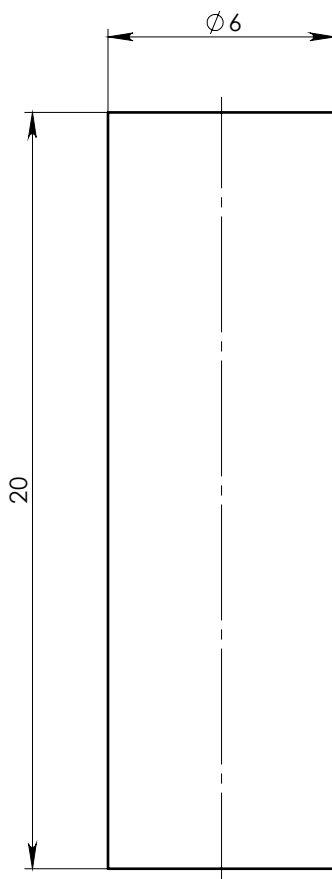
A

B

C

D

E



M



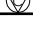
NOTE:

1. Material: Grade - N40.
2. Finish: Zn coated.
3. Remove all sharp corners.
4. Delivery magnetized.

PART MUST COMPLIANCE WITH THE
ROHS DIRECTIVE (2011/65/EU).

MAGNETIC CHARACTERISTICS:			
		CGS	SI
Br	MIN	12.5 kG	1.25 T
	MAX	12.8 kG	1.28 T
bHc	MIN	11 kOe	876 kA/m
jHc	MIN	12 kOe	955 kA/m
BHmax	MIN	38 MGOe	302 kJ/m ³
	MAX	41 MGOe	326 kJ/m ³

Working Temperature 80° max.

ASSEMBLY		NAME			SHEET 1		OF 1	
DWG.NO NDCR006020AMD		MAGNET NDCR006020A			NAME		DATE	
NAME		DATE			SIGNATURE			
	General Shape-and Position tolerance according DIN ISO 2768-mK		MATERIAL	NdFeB	DESIGNED	Igor	18/02/2021	
	Surface Finish: $\sqrt{3.2}$		MASS	4.24(gr)	DRAWN	Igor	18/02/2021	
	Control characteristics: - Important  - Critical 		SCALE	5:1	APPROVED	Rashid	18/02/2021	

F