

A

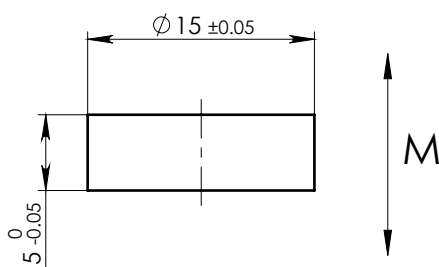
B

C

D

E

F





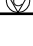
- NOTE:
1. Material: Grade - N48H.
  2. Finish: Zn coated.
  3. Remove all sharp corners.

PART MUST COMPLIANCE WITH THE  
ROHS DIRECTIVE (2011/65/EU).

MAGNETIC CHARACTERISTICS:

		CGS	SI
Br	MIN	13.7 kG	1.37 T
	MAX	14.3 kG	1.43 T
bHc	MIN	13.0 kOe	1035 kA/m
jHc	MIN	16.0 kOe	1274 kA/m
BHmax	MIN	46.0 MGOe	366 kJ/m <sup>3</sup>
	MAX	49.0 MGOe	390 kJ/m <sup>3</sup>

Working Temperature 120° max.

ASSEMBLY		NAME			SHEET 1		OF 1	
DWG.NO NDDR015005BMD		MAGNET NDDR015005B			NAME	DATE	SIGNATURE	
	General Shape-and Position tolerance according DIN ISO 2768-mK		MATERIAL	NdFeB	DESIGNED	Igor	22/11/2020	
	Surface Finish: $\sqrt{3.2}$		MASS	6.63(gr)	DRAWN	Igor	22/11/2020	
	Control characteristics: - Important  - Critical 		SCALE	2:1	APPROVED	Rashid	22/11/2020	