

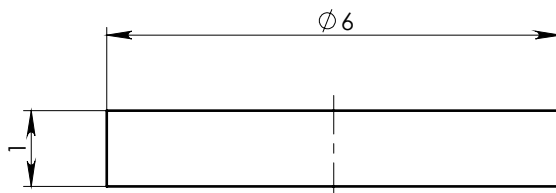
A

B

C

D

E



N  
↑  
S



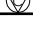
## NOTE:

1. Material: Grade - N35.
2. Finish: NiCuNi coated.

PART MUST COMPLIANCE WITH THE  
ROHS DIRECTIVE (2011/65/EU).

| MAGNETIC CHARACTERISTICS: |     |           |                       |
|---------------------------|-----|-----------|-----------------------|
|                           |     | CGS       | SI                    |
| Br                        | MIN | 11.7 kG   | 1.17 T                |
|                           | MAX | 12.2 kG   | 1.22 T                |
| bHc                       | MIN | 11.0 kOe  | 876 kA/m              |
| jHc                       | MIN | 12.0 kOe  | 955 kA/m              |
| BHmax                     | MIN | 33.0 MGOe | 263 kJ/m <sup>3</sup> |
|                           | MAX | 36.1 MGOe | 287 kJ/m <sup>3</sup> |

Working Temperature 80° max.

| ASSEMBLY  |   | NAME               |          |           | SHEET 1  |            | OF 1       |  |
|---|---|--------------------|----------|-----------|----------|------------|------------|--|
| DWG.NO  |   |                    |          |           | NAME     | DATE       | SIGNATURE  |  |
| NDDR006001HMD   |   | MAGNET NDDR006001H |          |           | Igor     | 30/10/2017 |            |  |
|  | General Shape-and Position tolerance according DIN ISO 2768-mK  |                    | MATERIAL | NdFeB     | DESIGNED | Igor       | 30/10/2017 |  |
|   | Surface Finish: $\sqrt{3.2}$  |                    | MASS     | 0.21 (gr) | DRAWN    | Igor       | 30/10/2017 |  |
|   | Control characteristics:<br>- Important <br>- Critical  |                    | SCALE    | 10:1      | APPROVED | Rashid     | 30/10/2017 |  |

F