

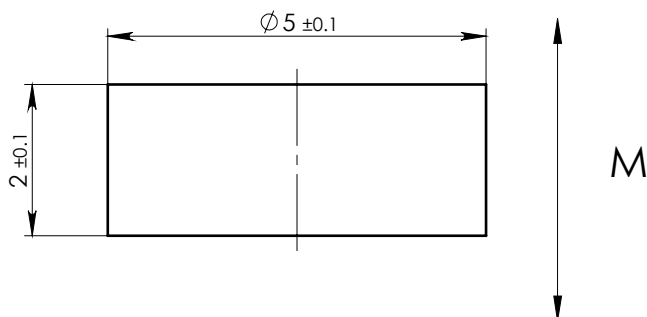
A

B

C

D

E




- NOTE:
1. Material: Grade - N35.
 2. Remove all sharp corners.
 3. Finish: Zn coated.

PART MUST COMPLIANCE WITH THE
ROHS DIRECTIVE (2011/65/EU).

MAGNETIC CHARACTERISTICS:			
		CGS	SI
Br	MIN	11.7 kG	1.17 T
	MAX	12.2 kG	1.22 T
bHc	MIN	11.0 kOe	876 kA/m
jHc	MIN	12.0 kOe	955 kA/m
BHmax	MIN	33.0 MGOe	263 kJ/m ³
	MAX	36.1 MGOe	287 kJ/m ³

Working Temperature 80° max.

ASSEMBLY		NAME			SHEET 1		OF 1	
DWG.NO					NAME	DATE	SIGNATURE	
NDDR005002AMD		MAGNET NDDR005002A			Igor	16/02/2020		
	General Shape-and Position tolerance according DIN ISO 2768-mK		MATERIAL	NdFeB	DESIGNED	Igor	16/02/2020	
	Surface Finish: $\sqrt{3.2}$		MASS	0.29(gr)	DRAWN	Igor	16/02/2020	
	Control characteristics: - Important M - Critical P		SCALE	10:1	APPROVED	Rashid	16/02/2020	

F