

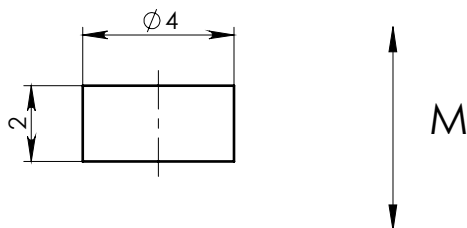
A

B

C

D

E




NOTE:

1. Material: Grade - N48.
2. Finish: Zn coated.

PART MUST COMPLIANCE WITH THE
ROHS DIRECTIVE (2011/65/EU).

MAGNETIC CHARACTERISTICS:			
		CGS	SI
Br	MIN	13.6 kG	1.36 T
	MAX	14.1 kG	1.41 T
bHc	MIN	11.0 kOe	876 kA/m
jHc	MIN	12.0 kOe	955 kA/m
BHmax	MIN	46.0 MGOe	366 kJ/m ³
	MAX	49.0 MGOe	390 kJ/m ³

Working Temperature 80° max.

ASSEMBLY		NAME			SHEET 1		OF 1	
DWG.NO					NAME	DATE	SIGNATURE	
NDDR004002BMD		MAGNET NDDR004002B			Igor	28/09/2016		
	General Shape-and Position tolerance according DIN ISO 2768-mK		MATERIAL	NdFeB	DESIGNED	Igor	28/09/2016	
	Surface Finish: $\sqrt{3.2}$		MASS	0.19(gr)	DRAWN	Igor	28/09/2016	
	Control characteristics: - Important $\sqrt{0.1}$ - Critical $\sqrt{0.05}$		SCALE	5:1	APPROVED	Rashid	28/09/2016	

F