

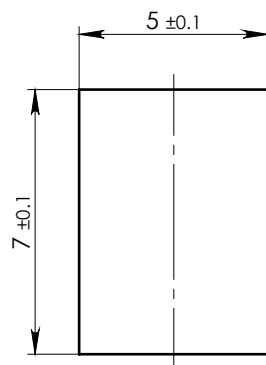
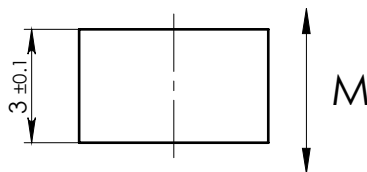
A

B

C

D

E



NOTE:
 1. Material: Grade - N35.
 2. Finish: NiCuNi coated.
 3. Remove sharp corners.

MAGNETIC CHARACTERISTICS:			
		CGS	SI
Br	MIN	11.7 kG	1.17 T
	MAX	12.2 kG	1.22 T
bHc	MIN	11 kOe	876 kA/m
jHc	MIN	12 kOe	955 kA/m
BHmax	MIN	33 MGOe	263 kJ/m ³
	MAX	36.1 MGOe	287 kJ/m ³

Working Temperature 80° max.

ASSEMBLY		NAME			SHEET 1		OF 1	
DWG.NO NDBR007005EMD		MAGNET NDBR007005E			NAME		DATE	
Magma Magnetic Technologies		MATERIAL			DESIGNED		SIGNATURE	
General Shape-and Position tolerance according DIN ISO 2768-mK		NdFeB			Igor		01/12/2013	
Surface Finish: 3.2/		MASS			Igor		01/12/2013	
Control characteristics: - Important - Critical		SCALE			Rashid		01/12/2013	
		5:1			APPROVED			